

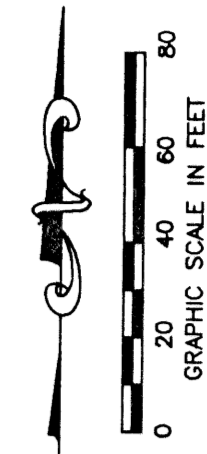
JOURNEY'S END PLAT TWO

PART OF SMITH DAIRY EAST P.U.D.
 BEING A PORTION OF SECTION 3, TOWNSHIP 45 SOUTH, RANGE 42 EAST
 TOGETHER WITH A REPLAT OF A PORTION OF BLOCK 39,
 PALM BEACH FARMS COMPANY, PLAT NO. 3,
 PLAT BOOK 2, PAGES 45 THROUGH 54
 SITUATE IN SECTION 3, TOWNSHIP 45 SOUTH, RANGE 42 EAST
 PALM BEACH COUNTY, FLORIDA
 FEBRUARY, 1999 SHEET 3 OF 12

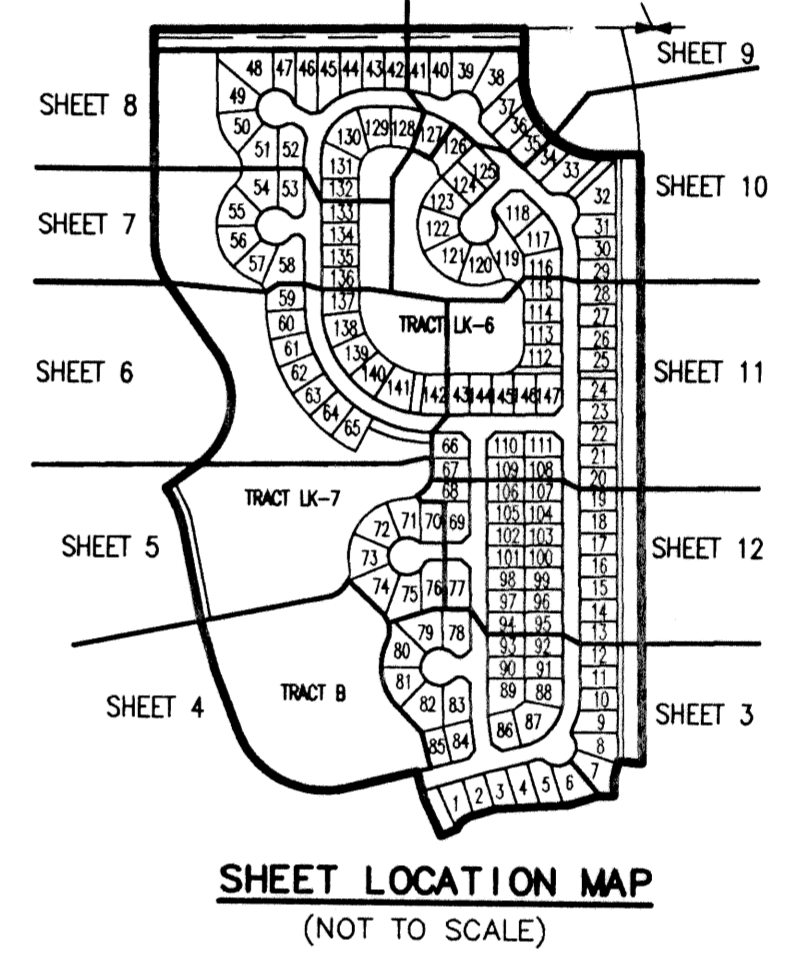
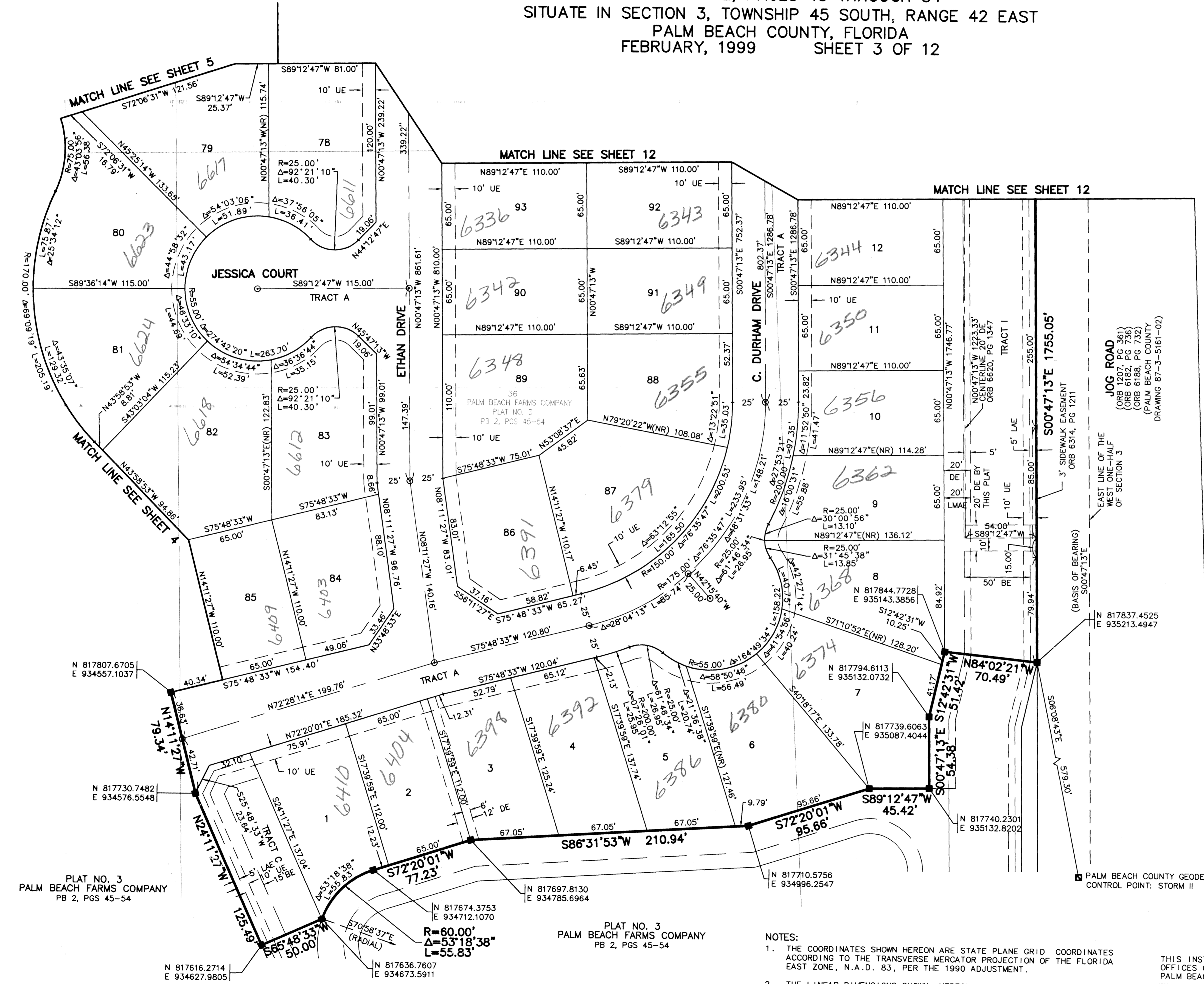
0677-006

54

STATE OF FLORIDA
 COUNTY OF PALM BEACH
 THIS PLAT WAS FILED FOR
 RECORD _____ DAY OF _____
 AD, 1999 AND DULY RECORDED
 IN PLAT BOOK _____ ON PAGES
 _____ AND _____
 DOROTHY H. WILKEN, CLERK
 BY: _____, D.C.



CIRCUIT COURT SEAL



WINSTON TRAILS P.U.D.

LEGEND

L	ARC LENGTH
AE	ACCESS EASEMENT
BE	BUFFER EASEMENT
Δ	CENTRAL (DELTA) ANGLE
CH	CHORD
DE	DRAINAGE EASEMENT
LAE	LIMITED ACCESS EASEMENT
LME	LAKE MAINTENANCE EASEMENT
LMAE	LAKE MAINTENANCE ACCESS EASEMENT
PUD	PLANNED UNIT OF DEVELOPMENT
(NR)	NON-RADIAL
ORB	OFFICIAL RECORD BOOK
PB	PLAT BOOK
PG(S)	PAGE(S)
R	RADIUS
(TYP)	TYPICAL
UE	UTILITY EASEMENT
■	PERMANENT REFERENCE MONUMENT
⊙	SET LB-048
⊙	PERMANENT CONTROL POINT
⊙	SET LB-048
⊙	CENTERLINE

- NOTES:**
- THE COORDINATES SHOWN HEREON ARE STATE PLANE GRID COORDINATES ACCORDING TO THE TRANSVERSE MERCATOR PROJECTION OF THE FLORIDA EAST ZONE, N.A.D. 83, PER THE 1990 ADJUSTMENT.
 - THE LINEAR DIMENSIONS SHOWN HEREON ARE GROUND DISTANCES IN U.S. FEET AND DECIMAL PARTS THEREOF.
 - THE GROUND DISTANCE TO GRID DISTANCE SCALE FACTOR IS 1.0000291 (GROUND DISTANCE X SCALE FACTOR = GRID DISTANCE).

THIS INSTRUMENT WAS PREPARED BY DAVID L. SMITH, P.S.M. IN THE OFFICES OF MOCK, ROOS & ASSOCIATES, INC., 5720 CORPORATE WAY, WEST PALM BEACH, FLORIDA 33407.

SCALE:	1" = 40'
P.A. NO.:	98082.53
DATE:	FEBRUARY 1999
DRAWING NO.:	45-42-03-68

MOCK • ROOS
 ENGINEERS • SURVEYORS • PLANNERS
 5720 Corporate Way, West Palm Beach, Florida 33407
 (561) 683-3113, fax 478-7248

JOURNEY'S END PLAT TWO
 PART OF SMITH DAIRY EAST P.U.D. BEING A PORTION OF SECTION 3, TOWNSHIP 45 SOUTH, RANGE 42 EAST, TOGETHER WITH A REPLAT OF A PORTION OF BLOCK 39, PALM BEACH FARMS COMPANY, PLAT NO. 3, PLAT BOOK 2, PAGES 45 THROUGH 54 SECTIONS 3, TOWNSHIP 45 SOUTH, RANGE 42 EAST PALM BEACH COUNTY, FLORIDA

SHEET 3 OF 12

K:\west\westsm_a\sm_arpo2.dwg 06/17/99 04:31:24 PM EDT

REV.: 06-17-99
 CAD FILE:
 WESTSM_A/SM_ARPO2

SUBDIVISION: Journey's End Plats
 BOOK: 85
 FLOOR: 06
 ZONING: PUD/SE
 QUAD: 84
 SE: 84-10(1)
 TAZ: 943
 PUD: Smith Dairy East

PLAT NO. 3
 PALM BEACH FARMS COMPANY
 PB 2, PGS 45-54

PLAT NO. 3
 PALM BEACH FARMS COMPANY
 PB 2, PGS 45-54

N 817616.2714
 E 934627.9805

N 817636.7607
 E 934673.5911

N 817674.3753
 E 934712.1070

N 817697.8130
 E 934785.6964

N 817710.5756
 E 934996.2547

N 817740.2301
 E 935132.8202

N 817739.6063
 E 935087.4044

N 817794.6113
 E 935132.0732

N 817844.7728
 E 935143.3856

N 817837.4525
 E 935213.4947

N 817807.6705
 E 934557.1037

N 817730.7482
 E 934576.5548